

DBMM

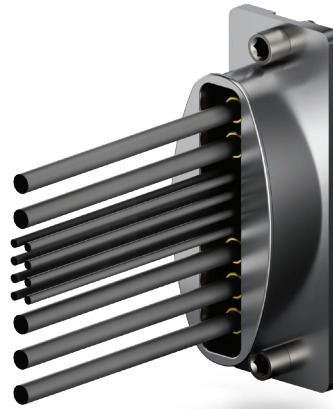
INTEGRATED
BACKSHELL
DMM

DBMM220



DBMM320

THE FUSION OF A CONNECTOR AND A BACKSHELL



ADVANTAGES OF THE DBMM

Integral EMI protection

Most compact solution

Light

Easy to manage

To provide a **mechanical protection** and a **360° shielding** against electromagnetic interferences in a compact way.

Like the DMM, DBMM is qualified according to **MIL-DTL83513G** standard.

AVAILABLE CONFIGURATIONS



DBMM220

- Male or female
- From 4 to 32 contacts
- Signal, power and coaxial contacts
- Straight on cable



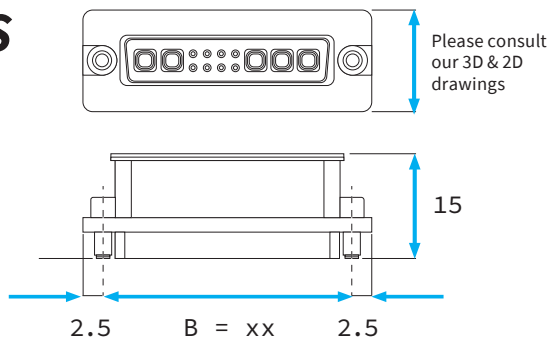
D53B

DBMM320



- Male or female
- From 6 to 48 contacts
- Signal, power and coaxial contacts
- Straight on cable

DIMENSIONS



ACCESSORIES



Coiled band



Flat band

DIMENSIONS TABLE

XX = Distance between fixings (mm)		12	14	16	18	20	22	24	26	28	30	32	34	36	38	40
Signal contacts number	row = 2	04	06	08	10	12	14	16	18	20	22	24	26	28	30	32
	row = 3	006	009	012	015	018	021	024	027	030	033	036	039	042	045	048

In terms of dimensions, a power contact or a coaxial contact correspond to 4 signal contacts.

PART NUMBERING

Number of rows	Gender	Signal contacts type	Number of signal contacts	Fixing	Power & coaxial contacts				Collar type		
DB22	1	S	nn(n)	D53B	-yy	zz-	Contact type		-F		
DB32	2	C					POWER	COAXIAL	-C		
		E							Ø		
							MALE	FEMALE	MALE	FEMALE	
							3305	4305	1320SS	2320SS	
							3308	4308	1324SS	2324SS	
							3310	4310	1326SS	2326SS	
							3315	4315	1347ZZ	2347ZZ	
							3320	4320	1385ZZ	2385ZZ	
									1326SS-75	2326ZZ-75	