

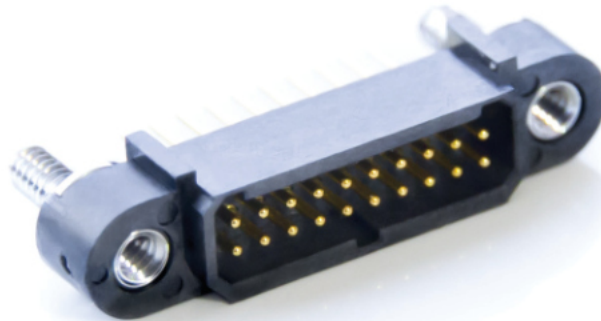


# AMM

1 MM PITCH

*IRRESISTIBLY  
SMALL*

*KEEP YOUR CONNECTION SIMPLE*

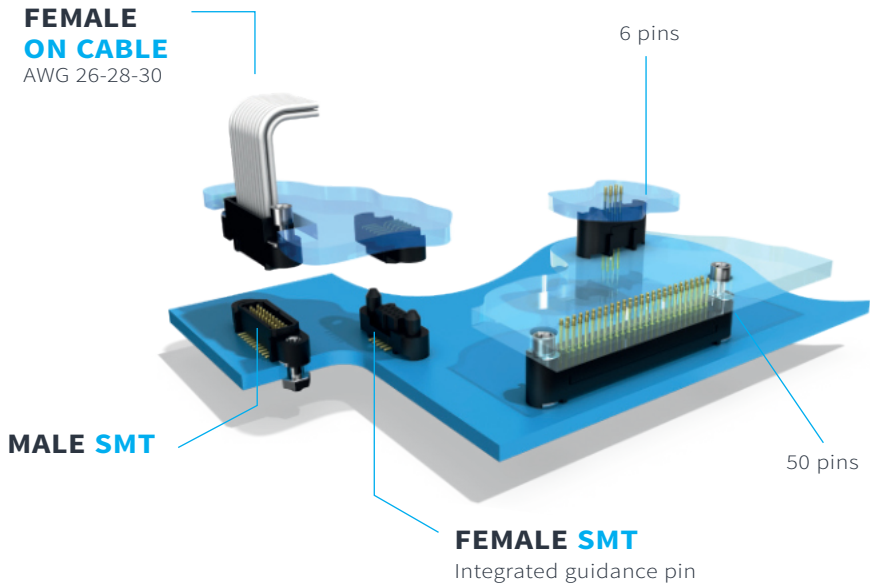


# Main Features & Product Specifications

Do you need a solution to solve your most demanding space constraints issues? Check out the capabilities offered by our new, AMM, 1.00 mm pitch connector. The highly reliable AMM series offers **five standard layouts** that are stocked and **available in just a few days**.

06, 10, 20, 34, or 50 contacts distributed over 2 rows.  
*Lightweight and secure with ingenious features like the integrated guidance pin for stacking purposes, the AMM range keeps your interconnect solution simple and efficient.*

- **MOQ: 1**
- **Tape&Reel packaging**
- **2D and 3D available on nicomatic.com**
- **Easy custom on request**



### EASY CUSTOM

ANY OTHER PIN NUMBER CONNECTORS W/O MOUNTING EARS HARNESS PARTICULAR SPECS available on request

### MATERIAL

- HOUSING: LCP
- MALE CONTACTS: COPPER ALLOY, AU 0.15 TO 0.4μ MAX
- FEMALE CONTACTS: SLOTTED CONTACT WITH 4 CONTACT POINTS, COPPER ZINC ALLOY, AU 0.15 TO 0.4μ MAX
- HARDWARE: STAINLESS STEEL 316L

## → SPECIFICATIONS

06-10-20-34-50	VIBRATION SEVERITY 15G SHOCK 100G
GLASS FIBER COMPOSITE	TEMPERATURE CYCLING -65°C +200°C
MECHANICAL OPERATIONS UP TO 1000 CYCLES	CONTACT RESISTANCE <10mΩ
UP TO 4.8A@25°C (PCB to cable 20 pins) UP TO 2.5A@25°C (PCB to PCB 20 pins)	WITHSTANDING VOLTAGE @SEA LEVEL 600 V RMS

## → TARGET MARKETS

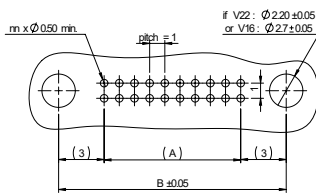


# Part Numbering & Overall Dimensions

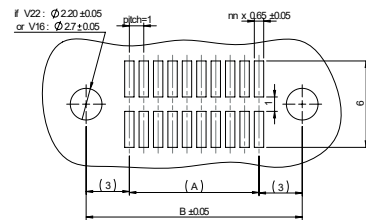
## → STRAIGHT ON PCB

Series	Gender	LF contact type	LF contact nbr	Fixing	Visual	Mating part (fixing)
A22	1 Male	Y Straigh Thru hole	06-10-20-34-50	V22 Straight jackpost		V16
		or		V16 Captive screw		V22
		T Straigh SMT		VXX No fixing		R
	2 Female	Y Straigh Thru hole	06-10-20-34-50	V22 Straight jackpost		V16
		or		V16 Captive screw		V22
		T Straigh SMT		R Racking		VXX
				VXX No fixing		

## → THRU HOLE PCB LAYOUT



## → SMT PCB LAYOUT



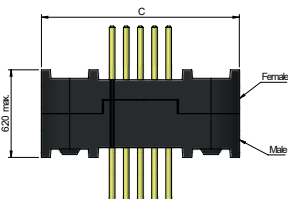
## → PRE-WIRED

Series	Gender	Signal wire	Color	Shape & Potting	LF contact nbr	Fixing	Config	Cable Length (mm)
HA22	2 Female	H AWG 28	6 Blue	Q with backpotting	06-10-20-34-50	V16 Jackscrew	F Fly lead	0150 0300 0450

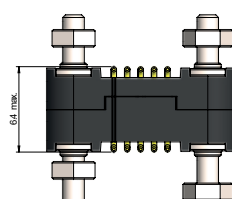
Please consult us for AWG 26 or 30 and for any other length, color or harness requirement

## → OVERALL DIMENSIONS

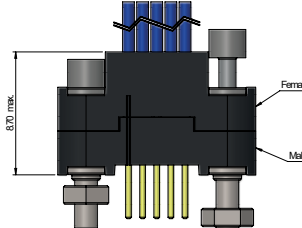
Male and female straight thru on PCB



Male and female straight SMT on PCB



Male on PCB And female on cable



Dimension table					
LF contact number	6	10	20	34	50
A = Distance between pins (mm)	2.00	4.00	9.00	16.00	24.00
B = Distance between fixings (mm)	8.00	10.00	15.00	22.00	30.00
C = Total length (mm)	12.00	14.00	19.00	26.00	34.00