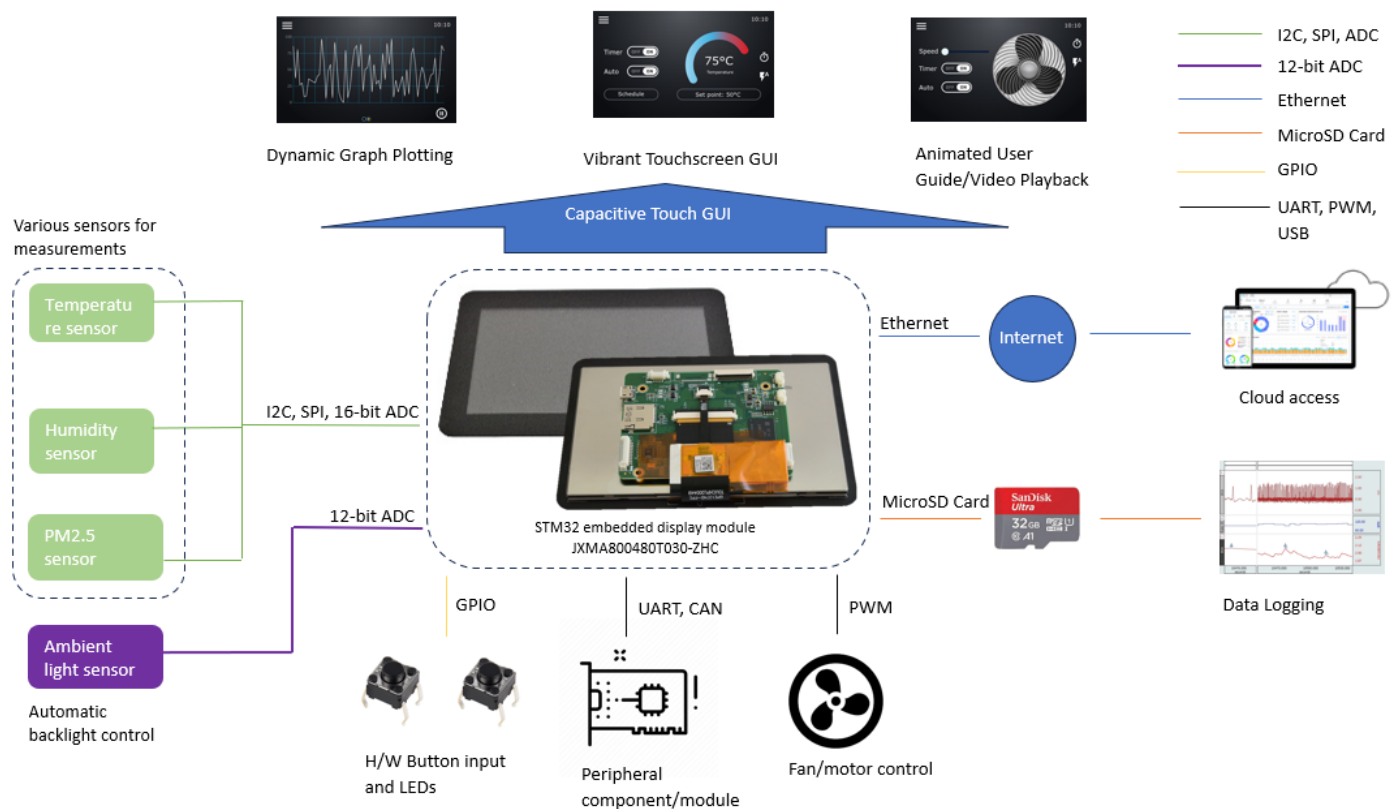




How Embedded Systems are the smart solution for HVAC applications

An efficient and effective HVAC system needs to function on several levels. Our range of embedded systems are ideally suited to HVAC applications, and fully customisable to your requirements.



Our STM32 displays offer a high resolution of 800x480 in compact 5" form factor with 850 nits' brightness. TouchGFX designer allows you to easily manage and switch between multiple languages. TouchGFX (plus free BSP) also means that you can focus on your software development without the hassle of building and verifying the hardware platform, reducing development by up to six months.

Intuitive, smartphone-like GUI - made easy.

Features

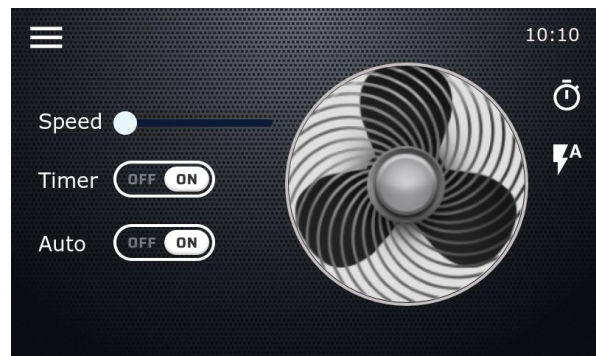
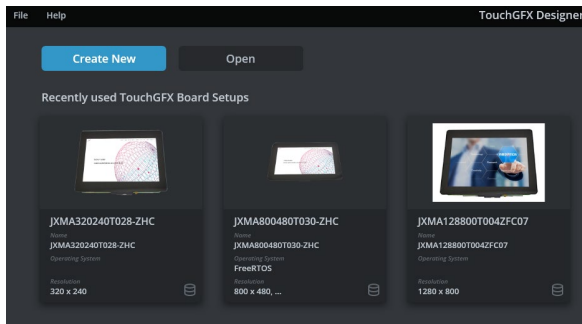
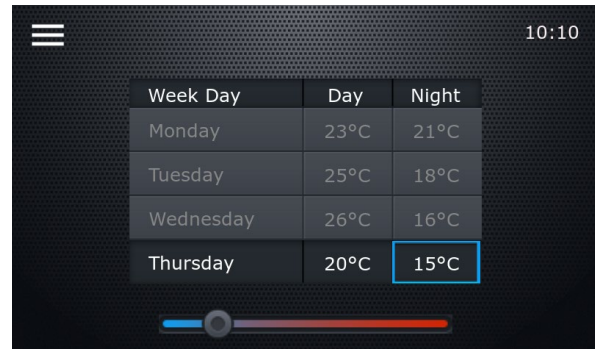
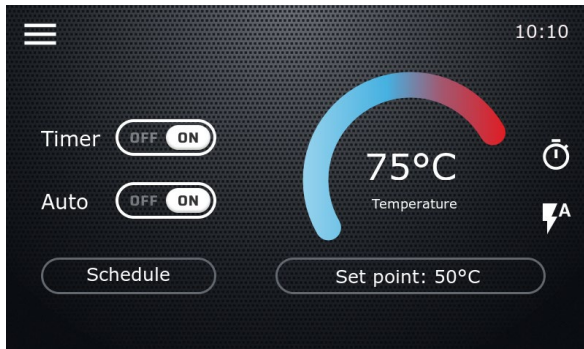
- i. Temperature & humidity display and control
- ii. Mode/Timer settings
- iii. System status Indicators.
- iv. Flexible and easy to use scheduler



Inelco Hunter Limited

specialist supplier of electronic components & solutions

Sensors and fan speed control are hugely beneficial for HVAC applications. Our STM32 comes with built-in PWM, SPI, I2C, RS232/485 (UART), enabling you to control your sensors and motor with ease.



Remote access and control is straightforward. Incorporating built-in 10/100 Base-T interface, you can securely control your system and easily access real time data, from anywhere.



For more details and for information about pricing, contact us directly on **0118 916 6928**